



**GLASGOW  
WOMEN'S  
LIBRARY**

# Glasgow Women's Library **Visual Guide**

This guide has been put together to help visitors understand how to get to and around Glasgow Women's Library.



# Opening and Closing Times

Monday: Closed

Tuesday: 10am - 4.30pm

Wednesday: 10am - 4.30pm

Thursday: 10am - 7pm

Friday: 10am - 4.30pm

Saturday: 12noon - 4pm

Sunday: Closed

---

# General Information

In addition to the lending library itself - with the majority of books being donated - we hold an incredible treasure trove of historical and contemporary artefacts and archive materials that celebrate women's lives, histories, and achievements.

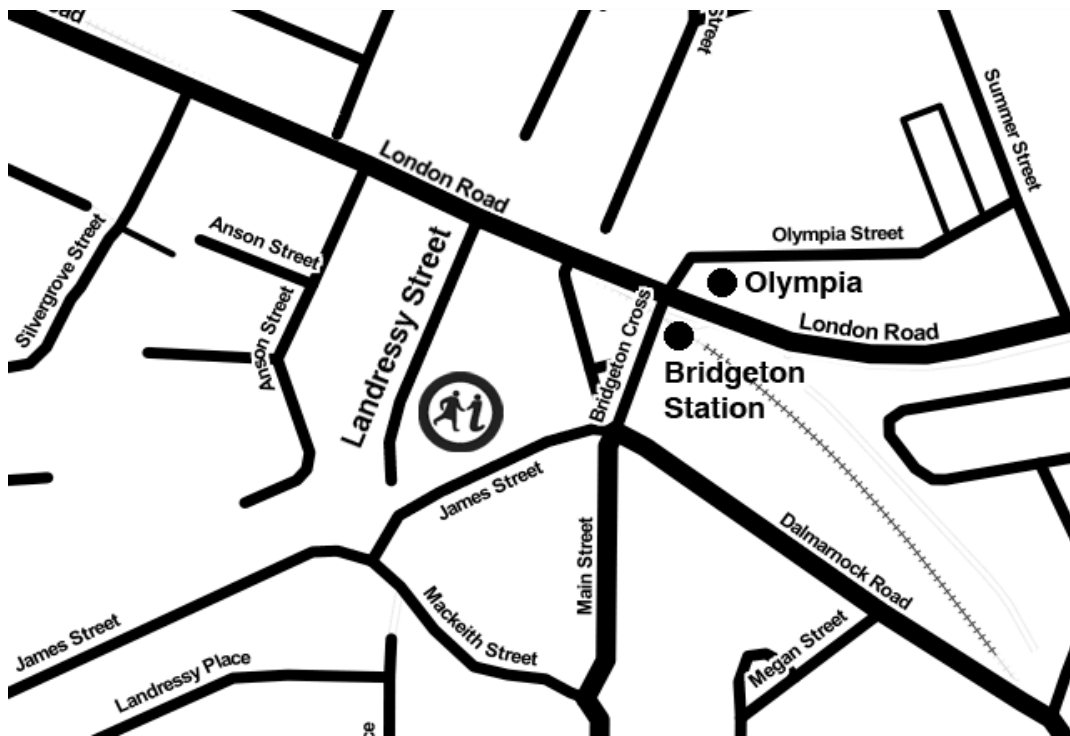
We also support thousands of women across Scotland every year to improve their lives through our services and programs, including support and activities that tackle many issues from poverty and women's health, sexuality and surviving violence.

First-time visitors and old friends are always welcome. The library is **free to enter**, and no appointment is needed!

---

# How to get here!

Glasgow Women's Library (GWL) is just around the corner from Bridgeton Cross on Landressy Street – you can reach the Library by car on Landressy Street from London Road, or on foot from James Street. Or click [here](#) for our location on Google Maps.



# Transport

## Our Address:

Glasgow Women's Library

23 Landressy Street

Glasgow G40 1BP

## Getting to us by bus:

- You can take the 18, 43, 46, 64, 65, 164, 263 or 2 to London Road/Bridgeton Cross.

## For information on bus services call:

- FirstGlasgow: 0141 423 6600
  - Glasgow Citybus: 0141 954 2255
  - Scottish Citylink Coaches: 08705 505050
-

## Getting to us by train:

- The closest railway station to the Library is Bridgeton station – take the low-level train from Glasgow Central. Please note that Bridgeton Station is not wheelchair-accessible, and the platforms are accessed by a long flight of stairs. The closest wheelchair-accessible station is Dalarnock Station, which is approximately 3/4 mile (1.2 km) from the Library.
- For more information about trains visit the [Scotrail website](#).

## Getting to us by bicycle:

- Cycling Route 75 follows the Clyde to Glasgow Green which is a 3-minute ride from Landressy Street along cycle paths.
  - We suggest using [CycleStreets.net](#) to plan your journey to and from GWL.
  - There are bike racks in the small square on James Street as well as our own bike shelter.
-

Please ask our front-of-house team if you would like to use it.

## Parking at GWL:

- We always encourage our visitors to use greener methods of transport when visiting GWL, but we understand that sometimes using a car is unavoidable. There is on street parking at the library, as well as a space on the street outside the Library that is reserved for visitors with mobility issues.

Please **contact the Library** if you have any questions about access. You can call us on 0141 550 2267 or email [info@womenslibrary.org.uk](mailto:info@womenslibrary.org.uk).

---

# Please be aware:

Whilst visiting, as this is a public space you might experience unfamiliar sights, sounds, and smells. Also, some of the exhibitions might have videos and/or music. In addition, there is no pressure to be quiet from staff!

If you need a place to relax, we do try to have quiet spaces within the GWL every day although sometimes this is not possible due to events and venue hires! If you know you will require this space, please contact us before you arrive to see what is on during the day.

You can find the designated quiet space for the day on the sign on reception at the front door.



Daily Quiet Place Sign at Reception

---



# Spotting our staff!

If you are lost, or in need of any assistance, please don't hesitate to ask a member of staff or a volunteer. You can identify us through these badges:



Employee or volunteer's name and pronouns badges.

# Accessibility

At GWL we try to make getting around as accessible as possible. The Library is fully wheelchair accessible, with lifts to the first floor and the mezzanine. We also have accessible toilets on each floor and all the bathrooms are individual closed stalls and are gender neutral. There is also plenty of seating around GWL to rest. All stairways have handrails.

At the front desk we have a tray of various access materials and visual aids as well as materials for stimming, please help yourself!



Stimming and visual aids tray at Front Desk

An induction loop is also available at the front desk, let the person at front of house know if you would like to use it.

Assistance dogs are welcome!

If you need help accessing the library, or would like more information about access, please **contact us** and we will be very happy to offer you any assistance.

**Please note**, if you are likely to be unable to hear the alarms or will need assistance to evacuate the building in the event of a fire alarm please tell a member of staff on your arrival.



Emergency Exit Sign

---

# Entering the Building

You enter the building on the ground floor, there are two floors in the building.



This is what the front of the building looks like

You will access the foyer first, where we have a display in the window to the right. There is often an accompanying video projected on the wall – this may have sound and will always have subtitles. You are welcome to stay there and explore or continue through the next set of double doors.

---





Our Foyer, with the 'Welcome Wall'  
and display area on the right when  
you arrive



Continuing through the next set of doors and you will now be in the shop and reception area of GWL. Both of these are within our lending library. If you wish to purchase something, please come to the front desk and we will ring it up!

This is what our shop and reception look like, this is also where you will find stimulating materials, a quiet space sign, and a member of staff who can help you. You are welcome to come say hello and ask any questions!



Our front of house desk



Our Shop, which is to your left as you enter the library



# Getting around - The Lending Library

The lending library is one of the largest rooms we have at GWL, moving to the right of the reception area here is where the books are stored, and we have a number of areas to sit and work or enjoy the collection. You are welcome to explore and read the books in our library.



Our Lending Library

---



There is an accessible bathroom past the reception area on the far-away wall of the lending library.



One of our accessible Toilets within the building

At the front of the library, we have an area for relaxing and a small exhibition space. You are welcome to explore this area!



One of our areas for relaxing and reading



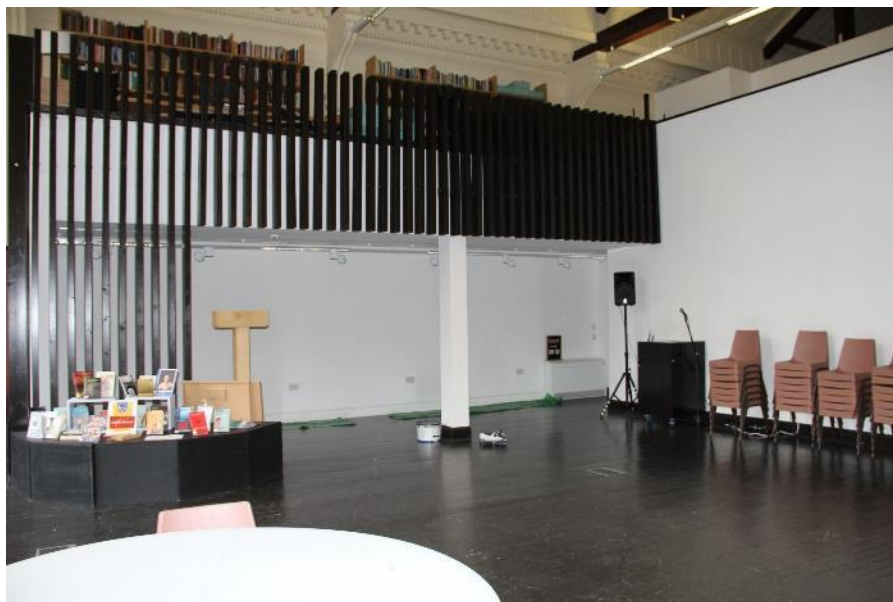
Our exhibition area in the lending library space

# Getting around - The Event Space

To the left of the reception, you will find our Event space. Here we have an exhibition wall, a number of sitting areas you are welcome to use and the staff kitchen.



Door to the events space, on the left of front of house  
in the lending library space



The events space with the exhibition wall under the mezzanine



The events space looking towards the lending library space

# Getting around - The Archives and the Mezzanine

You can access the mezzanine via the lift or the stairs. The mezzanine is where our archivists and museum curator work alongside some of our volunteers, student placements and researchers.

If you want to use the lift to access the mezzanine, it is on your right as soon as you enter the Event Space. Follow the hallway past the kitchen and it is on your left. Please let someone with a GWL badge know if you would like to use it!

---





The corridor to your right as you enter the events space leads to the staff kitchen and the lift.

This is the lift to the mezzanine situated beside the staff kitchen.



If you want to use the stairs, you can access the archives by using the door underneath the mezzanine to the right.



To the left as you go through the door are the stairs to the mezzanine and archive stores



On the right there are more toilets, all gender neutral and one of which is accessible



At the top of the stairs there are two doors – the one on right leads into the mezzanine space and the one on the left is to one of the archive stores.



The two doors at the top of the stairs, one to the archive store and one to the mezzanine space

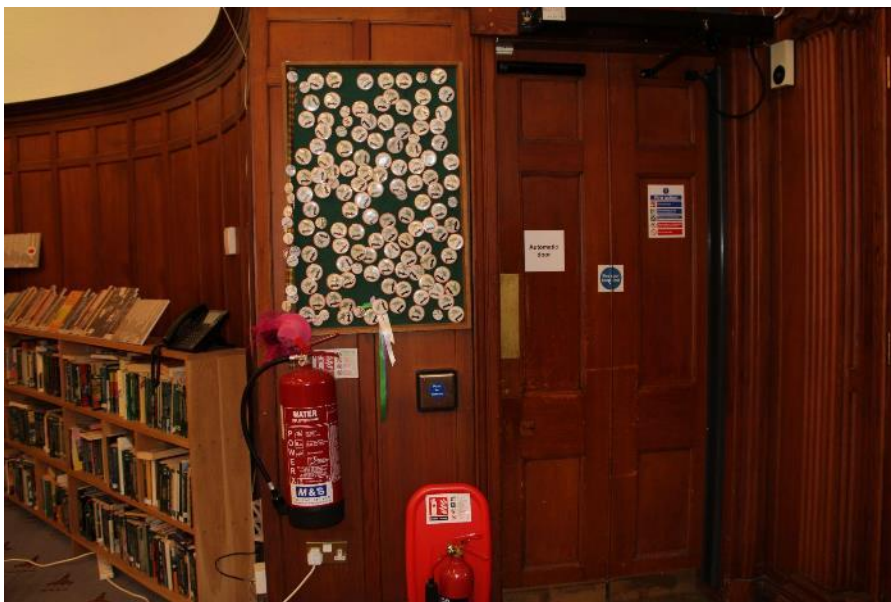
---



This is what the mezzanine looks like – there are display cases of things from our archive, as well as tables where volunteers and researchers work

# Getting around - The Gallery

When you enter the lending library space from the foyer, the door to the gallery is on your far right.



Door to the Gallery, you will need to push the button on the left to open it

---

Once you have pushed the button and entered the corridor another on the right door will open shortly after, through this, you will then see the stairs to the second floor.



Corridor to the Gallery stairs,  
right-hand door will open  
automatically

Once you go through the door to the  
right, there are the stairs to the second  
floor





The lift to the Gallery is at the right-hand side of the stairs

If you climbed the stairs, you would have access to a hallway with two sets of doors - one for the community room, and one for the Gallery. If you took the lift, you would enter immediately into the Gallery.



At the top of the stairs the upstairs gallery is to the left and the community room is through the double doors in front of you

In the gallery there are a number of chairs and tables which you are welcome to use, as well as an accessible and non-accessible toilets. The accessible toilets on this floor are also in this room, to the right of the double-doors to the Community room.

There often is an exhibition in this room, although this will depend on when you come.



Exhibition and Seating Area. The wooden door in this picture leads to the community room.



# Getting around - The Community Room

If you climbed the stairs to this level, you have access to the community room through the set of double doors directly ahead. If you got to this level using the lift, you will access the community room through the set of double doors which connect to the Gallery.

This room is used for classes or community events. You are welcome to sit in here if empty - please ask the person at front of house when you arrive if it is free.



This is what the community room looks like

# Exiting the Building

You will exit the building in the same place that you entered.



The door to exit GWL





The door for emergency exits

In the case of an emergency, you may be escorted out of our side door. If you are unsure, please ask a member of staff.

---

# In case of an emergency:

In the event of a fire alarm going off, you are advised to follow the emergency exit signs out of the building and to our meeting point - which is the small garden by the bike shed to the left of the exit.



Please follow these signs

---



Safety Meeting Point

Lifts will not be working, but there is an EVAC chair on both stairwells, please wait there and a member of staff will come to assist you.

If you are likely to be unable to hear the alarms or will need assistance to evacuate the building in the event of a fire alarm, please tell a member of staff on your arrival.

# Bathrooms

We have free period products in all bathrooms.

There are also baby changing facilities in both upstairs and downstairs accessible toilets.

Sounds: We have hand dryers in all our toilets as well as loud flushing toilets.

## Any questions?

If you have any questions, please contact us either by phone or by email.

Telephone: 0141 550 2267 | Email:  
[info@womenslibrary.org.uk](mailto:info@womenslibrary.org.uk)

---

# See you soon!!

